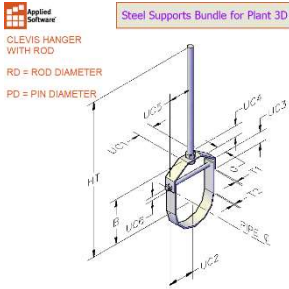


# Steel Supports for Plant 3D

Below is a list of the supports included with Plant 3D.



Steel Supports Bundle for Plant 3D

CLEVIS HANGER WITH ROD  
RD = ROD DIAMETER  
PD = PIN DIAMETER



Steel Supports Bundle for Plant 3D

CLEVIS HANGER WITH ROD AND BEAM CLAMP  
RD = ROD DIAMETER  
PD = PIN DIAMETER



Steel Supports Bundle for Plant 3D

CLEVIS HANGER WITH ROD AND SCISSOR CLAMP  
RD = ROD DIAMETER  
PD = PIN DIAMETER



Steel Supports Bundle for Plant 3D

CLEVIS HANGER WITH ROD AND SQUARE WASHERS  
RD = ROD DIAMETER  
PD = PIN DIAMETER



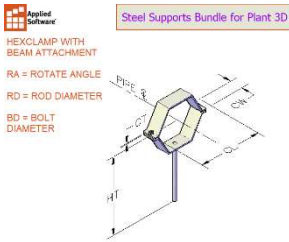
Steel Supports Bundle for Plant 3D

ELBOW HANGER WITH ROD AND BEAM CLAMP  
RD = ROD DIAMETER



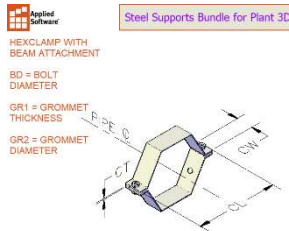
Steel Supports Bundle for Plant 3D

HEXCLAMP  
BD = BOLT DIAMETER



Steel Supports Bundle for Plant 3D

HEXCLAMP WITH BEAM ATTACHMENT  
RA = ROTATE ANGLE  
RD = ROD DIAMETER  
BD = BOLT DIAMETER



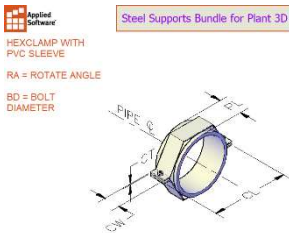
Steel Supports Bundle for Plant 3D

HEXCLAMP WITH BEAM ATTACHMENT  
BD = BOLT DIAMETER  
GR1 = GROMMET THICKNESS  
GR2 = GROMMET DIAMETER



Steel Supports Bundle for Plant 3D

HEXCLAMP WITH GROMMETS AND BEAM ATTACHMENT  
RA = ROTATE ANGLE  
RD = ROD DIAMETER  
BD = BOLT DIAMETER  
GR1 = GROMMET THICKNESS  
GR2 = GROMMET DIAMETER



Steel Supports Bundle for Plant 3D

HEXCLAMP WITH PVC SLEEVE  
RA = ROTATE ANGLE  
BD = BOLT DIAMETER



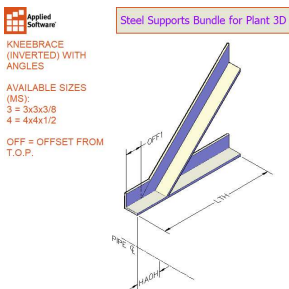
Steel Supports Bundle for Plant 3D

HEXCLAMP WITH PVC SLEEVE AND BEAM ATTACHMENT  
RA = ROTATE ANGLE  
RD = ROD DIAMETER  
BD = BOLT DIAMETER



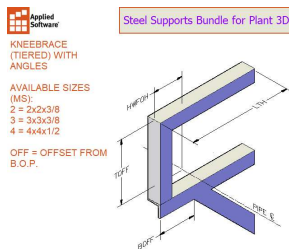
Steel Supports Bundle for Plant 3D

KNEEBRACE WITH ANGLES  
AVAILABLE SIZES (MS):  
3 = 3x3x3/8  
4 = 4x4x1/2  
OFF = OFFSET FROM B.O.P.



Steel Supports Bundle for Plant 3D

KNEEBRACE (INVERTED) WITH ANGLES  
AVAILABLE SIZES (MS):  
3 = 3x3x3/8  
4 = 4x4x1/2  
OFF = OFFSET FROM T.O.P.



Steel Supports Bundle for Plant 3D

KNEEBRACE (TIRED) WITH ANGLES  
AVAILABLE SIZES (MS):  
2 = 2x2x3/8  
3 = 3x3x3/8  
4 = 4x4x1/2  
OFF = OFFSET FROM B.O.P.



Steel Supports Bundle for Plant 3D

KNEEBRACE WITH WIDE FLANGES  
AVAILABLE SIZES (MS):  
4 = W4x13  
6 = W6x15  
8 = W8x18  
10 = W10x30  
OFF = OFFSET FROM B.O.P.

**Steel Supports Bundle for Plant 3D**

**KNEEBRACE (INVERTED) WITH WIDE FLANGES**

AVAILABLE SIZES (MS):  
 4 = W4x13  
 6 = W6x15  
 8 = W8x18  
 10 = W10x30

OFF = OFFSET FROM T.O.P.

**Steel Supports Bundle for Plant 3D**

**KNEEBRACE (TIRED) WITH WIDE FLANGES**

AVAILABLE SIZES (MS):  
 4 = W4x13  
 6 = W6x15  
 8 = W8x18  
 10 = W10x30

OFF = OFFSET FROM B.G.P.

**Steel Supports Bundle for Plant 3D**

**ROOF-MOUNTED SUPPORT**

HMS = HORIZONTAL MEMBER SIZE  
 VMS = VERTICAL MEMBER SIZE  
 ML = MIDDLE LEG TOGGLE (OFF=0, ON=1)  
 TM = TOP MEMBER TOGGLE (OFF=0, ON=1)

**Steel Supports Bundle for Plant 3D**

**ROOF-MOUNTED SUPPORT**

HMS = HORIZONTAL MEMBER SIZE  
 VMS = VERTICAL MEMBER SIZE

**Steel Supports Bundle for Plant 3D**

**ROOF-MOUNTED SUPPORTS**

THIS SUPPORT IS FOR A 3" PIPE ONLY

**Steel Supports Bundle for Plant 3D**

**ROOF-MOUNTED SUPPORTS**

THIS SUPPORT IS FOR A 4" PIPE ONLY

**Steel Supports Bundle for Plant 3D**

**ROOF-MOUNTED SUPPORTS**

THIS SUPPORT IS FOR A 6" PIPE ONLY

**Steel Supports Bundle for Plant 3D**

**ROOF-MOUNTED SUPPORTS**

THIS SUPPORT IS FOR A 8" PIPE ONLY

**Steel Supports Bundle for Plant 3D**

**STANCHION ADJUSTABLE PIPE**

PS1 = TOP PIPE OD  
 PS1THK = TOP PIPE THICKNESS  
 PS2 = BOTTOM PIPE OD  
 PS2THK = BOTTOM PIPE THICKNESS  
 OFF = OFFSET FROM B.O.P.

**Steel Supports Bundle for Plant 3D**

**STANCHION ADJUSTABLE PIPE WITH CHANNEL**

PS1 = TOP PIPE OD  
 PS1THK = TOP PIPE THICKNESS  
 PS2 = BOTTOM PIPE OD  
 PS2THK = BOTTOM PIPE THICKNESS  
 OFF = OFFSET FROM B.O.P.

**Steel Supports Bundle for Plant 3D**

**STANCHION CRADLE**

AVAILABLE SIZES (PS):  
 2 = 2"  
 3 = 3"  
 4 = 4"  
 6 = 6"

RS = ROD DIAMETER  
 CT = CRADLE THICKNESS

**Steel Supports Bundle for Plant 3D**

**STEEL SUPPORT ANGLE**

AVAILABLE SIZES (MS):  
 3 = 3x3x3/8  
 4 = 4x4x1/2

OFF = OFFSET FROM B.O.P.

**Steel Supports Bundle for Plant 3D**

**STEEL SUPPORT ANGLE WITH VERTICAL ANGLE**

AVAILABLE SIZES (MS):  
 2 = 2x2x3/8  
 3 = 3x3x3/8  
 4 = 4x4x1/2

OFF = OFFSET FROM B.O.P.

**Steel Supports Bundle for Plant 3D**

**STEEL SUPPORT WIDE FLANGE**

AVAILABLE SIZES (MS):  
 4 = W4x13  
 6 = W6x15  
 8 = W8x18  
 10 = W10x30

OFF = OFFSET FROM B.O.P.

**Steel Supports Bundle for Plant 3D**

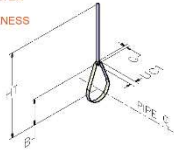
**STEEL SUPPORT WIDE FLANGE WITH VERTICAL WIDE FLANGE**

AVAILABLE SIZES (MS):  
 4 = W4x13  
 6 = W6x15  
 8 = W8x18  
 10 = W10x30

OFF = OFFSET FROM B.O.P.

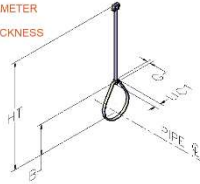
**Steel Supports Bundle for Plant 3D**

SWIVEL RING HANGER WITH ROD  
RD = ROD DIAMETER  
T1 = RING THICKNESS



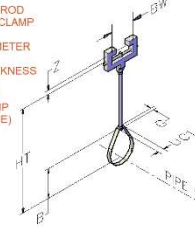
**Steel Supports Bundle for Plant 3D**

SWIVEL RING HANGER WITH ROD AND BEAM CLAMP  
RD = ROD DIAMETER  
T1 = RING THICKNESS



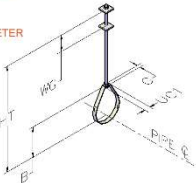
**Steel Supports Bundle for Plant 3D**

SWIVEL RING HANGER WITH ROD AND SCISSOR CLAMP  
RD = ROD DIAMETER  
T1 = RING THICKNESS  
RSC = ROTATE SCISSOR CLAMP (DEGREE VALUE)



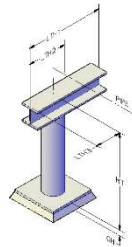
**Steel Supports Bundle for Plant 3D**

SWIVEL RING HANGER WITH ROD AND SQUARE WASHERS  
RD = ROD DIAMETER  
T1 = RING THICKNESS  
WS = WASHER SIZE



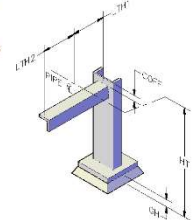
**Steel Supports Bundle for Plant 3D**

TEEPOLE WITH POST  
AVAILABLE SIZES (MS):  
4 = W4x13  
6 = W6x15  
8 = W8x18  
10 = W10x30  
(PS):  
1 = 4 S OD  
6 = 6.625 OD  
OFF = OFFSET FROM B.O.P.



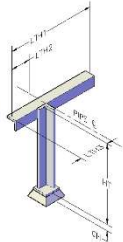
**Steel Supports Bundle for Plant 3D**

TEEPOLE WITH CHANNEL AND ANGLE  
AVAILABLE SIZES (CMS):  
4 = 4x5.4  
5 = 5x9  
(AMS):  
2 = 2x2x3/8  
3 = 3x3x3/8  
4 = 4x4x1/2



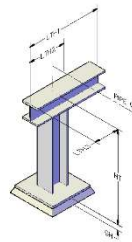
**Steel Supports Bundle for Plant 3D**

TEEPOLE WITH ANGLE  
AVAILABLE SIZES (MS1):  
2 = 2x2x3/8  
3 = 3x3x3/8  
4 = 4x4x1/2  
OFF = OFFSET FROM B.O.P.



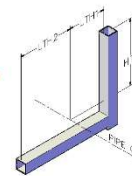
**Steel Supports Bundle for Plant 3D**

TEEPOLE WITH WIDE FLANGE  
AVAILABLE SIZES (MS):  
4 = W4x13  
6 = W6x15  
8 = W8x18  
10 = W10x30  
(MS):  
4 = W4x13  
6 = W6x15  
8 = W8x18  
10 = W10x30  
OFF = OFFSET FROM B.O.P.



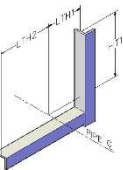
**Steel Supports Bundle for Plant 3D**

TRAPEZE ON BEAM AND COLUMN WITH HLT  
AVAILABLE SIZES (MS):  
90 = MI 90mm  
120 = MI 120mm  
OFF = OFFSET FROM B.O.P.



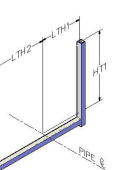
**Steel Supports Bundle for Plant 3D**

TRAPEZE ON BEAM AND COLUMN WITH ANGLES  
AVAILABLE SIZES (MS):  
2 = 2x2x3/8  
3 = 3x3x3/8  
4 = 4x4x1/2  
OFF = OFFSET FROM B.O.P.



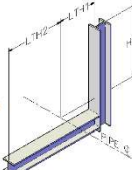
**Steel Supports Bundle for Plant 3D**

TRAPEZE ON BEAM AND COLUMN WITH UNISTRUT  
AVAILABLE SIZES (MS):  
1000 = P1000  
1100 = P1100  
2000 = P2000  
3000 = P3000  
3300 = P3300  
4000 = P4000  
4100 = P4100  
5000 = P5000  
5500 = P5500  
OFF = OFFSET FROM B.O.P.



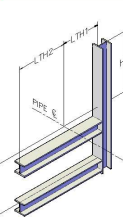
**Steel Supports Bundle for Plant 3D**

TRAPEZE ON BEAM AND COLUMN WITH WIDE FLANGES  
AVAILABLE SIZES (MS):  
4 = W4x13  
6 = W6x15  
8 = W8x18  
10 = W10x30  
OFF = OFFSET FROM B.O.P.



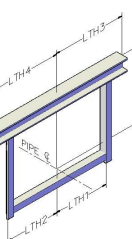
**Steel Supports Bundle for Plant 3D**

TRAPEZE (TIERED) ON BEAM AND COLUMN WITH WIDE FLANGES  
AVAILABLE SIZES (MS):  
4 = W4x13  
6 = W6x15  
8 = W8x18  
10 = W10x30  
OFF = OFFSET FROM B.O.P.



**Steel Supports Bundle for Plant 3D**

TRAPEZE WITH BEAM AND ANGLES  
AVAILABLE SIZES (MS1):  
2 = 2x2x3/8  
3 = 3x3x3/8  
4 = 4x4x1/2  
(MS2):  
4 = W4x13  
6 = W6x15  
8 = W8x18  
10 = W10x30  
OFF = OFFSET FROM B.O.P.



**Steel Supports Bundle for Plant 3D**

TRAPEZE WITH BEAM AND WIDE FLANGES  
AVAILABLE SIZES (MS1):  
4 = W4x13  
6 = W6x15  
8 = W8x18  
10 = W10x30  
(MS2):  
4 = W4x13  
6 = W6x15  
8 = W8x18  
10 = W10x30  
OFF = OFFSET FROM B.O.P.

